

# Motorola APX Configuration

For Use With EPIC 3 RDI VOICE AMPLIFIER



**WARNINGS:**

**FAILURE TO ADHERE TO WARNINGS MAY RESULT IN SERIOUS INJURY OR DEATH**

- THE MOTOROLA APX RADIO AND ITS ACCESSORIES ARE COMPATIBLE WITH SCOTT COMMUNICATION SYSTEMS AND RELATED RESPIRATORY PRODUCTS WHICH MAY SUPPORT HUMAN LIFE IN HAZARDOUS ATMOSPHERES. FAILURE TO CAREFULLY FOLLOW THESE INSTRUCTIONS AND WARNINGS AND THE INSTRUCTIONS AND WARNINGS CONTAINED IN YOUR SCOTT COMMUNICATIONS OR RESPIRATOR OPERATING AND MAINTENANCE INSTRUCTIONS OR MOTOROLA APX RADIO INSTRUCTIONS MAY RESULT IN SERIOUS INJURY OR DEATH.
- THESE PRODUCTS ARE DESIGNED AND INTENDED TO FUNCTION PROPERLY IN REASONABLE/ORDINARY FIREFIGHTING CONDITIONS. LIKE ALL EQUIPMENT, THE FUNCTIONALITY OF THIS PRODUCT MAY BE COMPROMISED BY EXTREME FIRE CONDITIONS.

## MOTOROLA APX RADIO CONFIGURATION FOR EPIC 3 RDI AMPLIFIER


Each Motorola APX radio must be configured to the Scott Safety recommended settings to ensure proper operation with the EPIC 3 RDI Voice Amplifier and Motorola XE RSM. The radio settings shown in this guide are accessible using Motorola APX CPS version R15.00.01 or higher.

Only the listed radio settings are recommended for the EPIC 3 RDI Voice Amplifier. All other radio settings can be customized to meet specific customer requirements. Please contact Motorola or your Motorola business partner regarding how to properly configure the radio.

## APX RADIO FIRMWARE CONFIGURATION

All Motorola APX radios must be updated to APX firmware version 15.00.00 or higher to operate properly with the EPIC 3 RDI Voice Amplifier and Motorola XE RSM.

When properly configured, your selection screen will look like the one below:

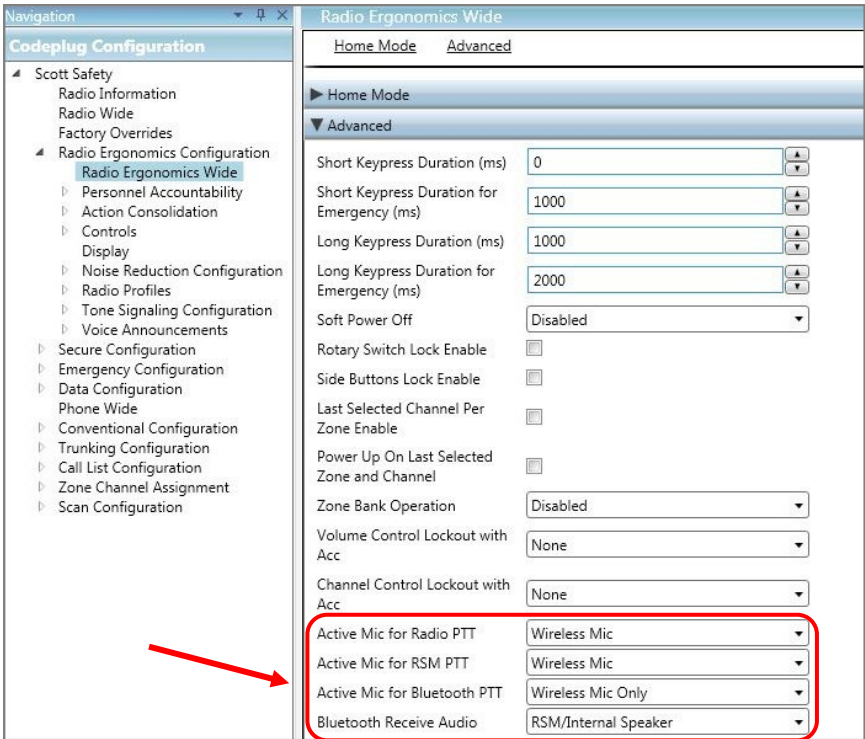
Radio Information				
<a href="#">General</a>	<a href="#">Tracking</a>	<a href="#">FLASHport</a>	<a href="#">Advanced System Key Info</a>	<a href="#">Option/Expansion Board</a>
▼ General				
Codeplug Alias	<input type="text" value="Scott Safety"/>			
Model Number	H98UCD9PW5AN			
Maximum Channels	1000			
Serial Number	<input type="text" value="756CRD0332"/>			
Primary Frequency Band	700/800 MHz			
Regional Governance	<input type="text" value="FCC Compliant"/>			
Codeplug Version	R15.00.01			
Firmware Version	R15.00.00 			

# MOTOROLA APX RADIO CONFIGURATION FOR EPIC 3 RDI AMPLIFIER

## RADIO ERGONOMICS WIDE CONFIGURATION

All Motorola APX radios must have the following Radio Ergonomics Wide configuration settings to operate properly with the EPIC 3 RDI Voice Amplifier and Motorola XE RSM:

- Active Mic for Radio PTT                      Wireless Mic
- Active Mic for RSM PTT                      Wireless Mic
- Active Mic for Bluetooth PTT              Wireless Mic
- Bluetooth Receive Audio                  RSM / Internal Speaker



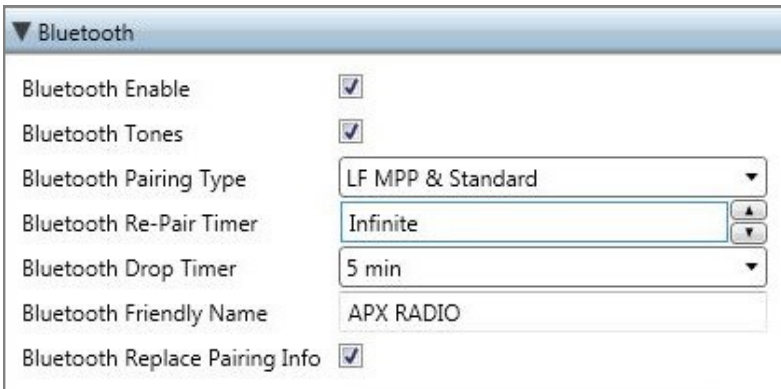
## MOTOROLA APX RADIO CONFIGURATION FOR EPIC 3 RDI AMPLIFIER

### RADIO WIDE BLUETOOTH CONFIGURATION

All Motorola APX radios must have the following Bluetooth configuration settings to operate properly with the EPIC 3 RDI Voice Amplifier:

- Bluetooth Enable: Yes
- Bluetooth Tones: Yes
- Bluetooth Pairing Type: LF MPP & Standard
- Bluetooth Re-Pair Timer: Infinite
- Bluetooth Drop Timer: 5 minutes minimum
- Bluetooth Replace Pairing Info: Yes

When properly configured, your selection screen will look like the one below:



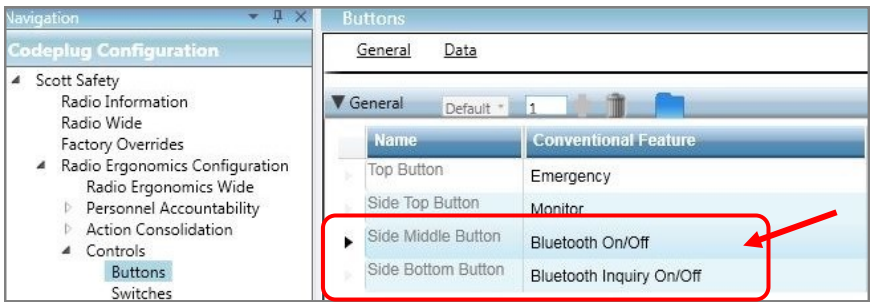
▼ Bluetooth	
Bluetooth Enable	<input checked="" type="checkbox"/>
Bluetooth Tones	<input checked="" type="checkbox"/>
Bluetooth Pairing Type	LF MPP & Standard
Bluetooth Re-Pair Timer	Infinite
Bluetooth Drop Timer	5 min
Bluetooth Friendly Name	APX RADIO
Bluetooth Replace Pairing Info	<input checked="" type="checkbox"/>

# MOTOROLA APX RADIO CONFIGURATION FOR EPIC 3 RDI AMPLIFIER

## RADIO BUTTON CONFIGURATION

All Motorola APX radios should have the following button configuration settings to operate properly with the EPIC 3 RDI Voice Amplifier. Side middle and bottom button functionality can be swapped if desired. APX radios with two displays can also have Bluetooth On/Off and Bluetooth Inquiry On/Off features programmed in the radio front display.

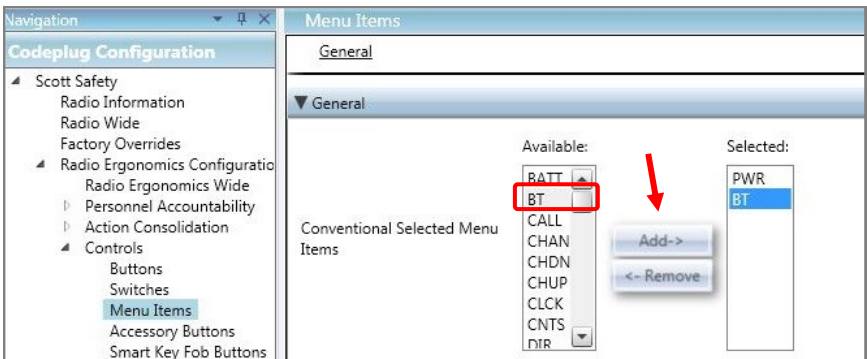
- Side (1-dot) Middle Button: Bluetooth On/Off
- Side (2-dot) Bottom Button: Bluetooth Inquiry On/Off



## RADIO DISPLAY MENU CONFIGURATION

Motorola APX radios with two displays must have the following menu configuration settings to operate properly with the EPIC 3 RDI Voice Amplifier.

- Add BT to the Radio Menu Items by selecting it under Available and clicking the Add → button. BT will now appear under Selected.



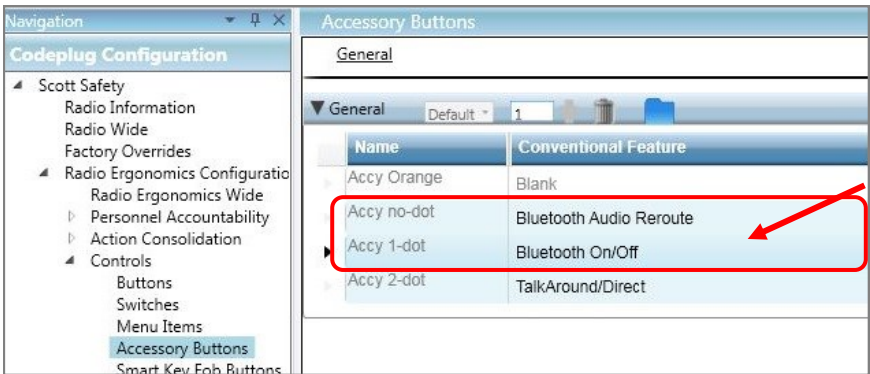
# MOTOROLA APX RADIO CONFIGURATION FOR EPIC 3 RDI AMPLIFIER

## ACCESSORY BUTTON CONFIGURATION

For all Motorola APX radios using a matching Motorola XE RSM (Remote Speaker Mic), the radio should have the following button configuration settings to operate properly with the EPIC 3 RDI Voice Amplifier.

- Accessory no-dot: Bluetooth Audio Reroute (optional setting)
- Accessory 1-dot: Bluetooth On/Off (optional setting)

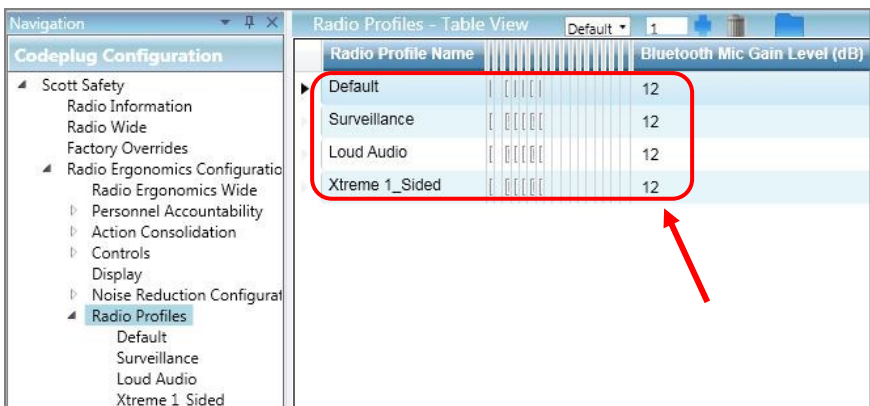
*NOTE: The XE RSM primary Push-To-Talk (PTT) button will control the PTT functions of the EPIC 3 RDI Voice Amplifier as programmed in the Radio Ergonomics Wide Configuration section under the Active Mic for RSM PTT setting.*



## RADIO PROFILE BLUETOOTH MIC GAIN LEVEL CONFIGURATION

All Motorola APX radios should have the following Radio Profile Bluetooth Mic Gain Level configuration settings to optimize operation with the EPIC 3 RDI Voice Amplifier. The setting should be set for all standard and custom Radio Profiles.

- All Radio Profiles / Bluetooth Mic Gain Level (dB): 12 (maximum setting)





4320 Goldmine Road  
Monroe, NC 28110  
[www.scottsafety.com](http://www.scottsafety.com)  
(704) 291- 8300

©2017 SCOTT Safety, SCOTT, the SCOTT SAFETY Logo, and SCOTT Safety, are registered and/or unregistered marks of SCOTT Technologies, Inc. or its affiliates.