

# SCOTT SIGHT™



4320 Goldmine Road  
Monroe, NC 28110

[www.scottsafety.com](http://www.scottsafety.com)  
(704) 291- 8300




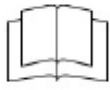
**PRE-OPERATIONAL WARNINGS:**

Please Read Carefully and Fully Understand User Instructions/Manual before use of this device.

# WARNING

This Quick Start Guide is NOT a substitute for the User Instructions/Manual provided with this device. All individuals who have or will have responsibility of using or servicing the device must read and fully understand the contents of the User Instructions/Manual prior to operation. Failure to comply with the User Instructions/Manual or misuse of the device may result in serious injury or death.

 SIGHT has been designed to meet the applicable standards that govern SCBA accessories. The device has the following approvals: NIOSH Certified to NFPA 1981, 2013 ed, NIOSH 42CFR, Part 84, UL 913 6th ed, ATEX, IECEx and IP 66/67



**WARNING:** Read User Manual before installation or use.  
**Avertissement:** Lire attentivement les instructions avant de mettre en marche.

**COPYRIGHT**

This Quick Start Guide must not be copied in part or whole, or used for purposes other than its intended purpose without the written permission of Scott Safety.

## POWERING OFF

1. Push and hold the IMD power button for 5 seconds then release. The IMD and TIC will both power down.



2. The green power light on the front of the mask will be turned off.



## POWERING ON

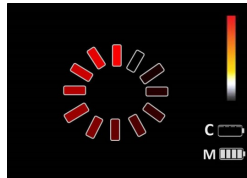
1. Push and hold the IMD power button for 1 second then release.



2. When you release the button, the Scott Safety splash screen appears.



3. A spinning wait cursor will appear on a black background.



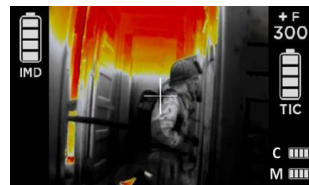
4. Turn the mask over to view the front of the TIC. Push and hold the TIC power button for 3 seconds then release.



5. The TIC will flash green when powered on.



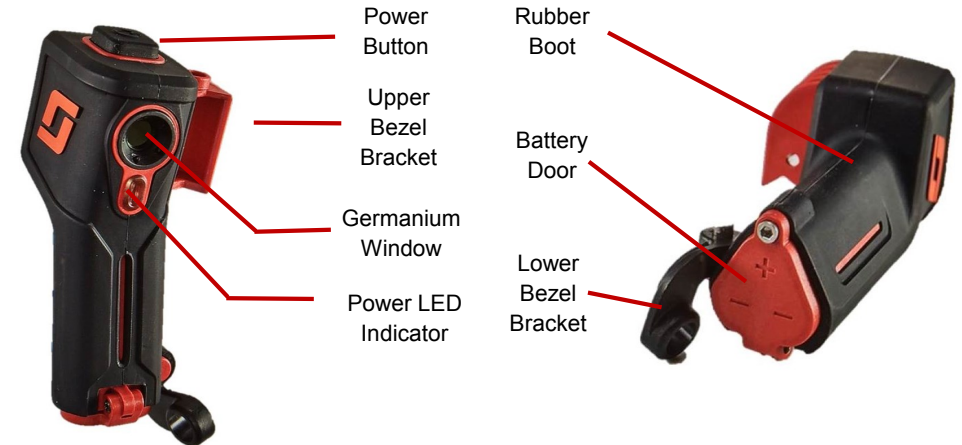
6. Turn mask back over to view IMD. Once paired the IMD display will no longer be black. You can now see thermal images.



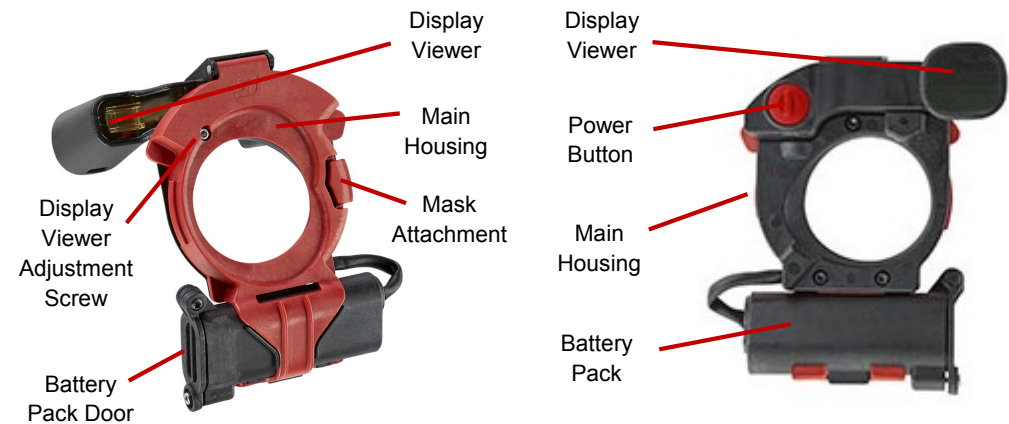
## INTRODUCTION

If you have purchased a Scott Sight kit, please refer to the user manual for installation procedures.

### THERMAL IMAGE CAMERA



### IN MASK DISPLAY



## TIC BATTERY INSTALLATION

1. The 3 AAA batteries of the TIC can be replaced without removing the module from the AV-3000 HT.

To access the battery compartment, unscrew the bolt from the bottom of the device.

The bolt cannot be fully unscrewed, and will remain with the battery door once open.



2. Once open, the battery door is able to hinge forward.



3. The batteries can now be removed and replaced.

When installing new batteries, take note of the polarity as indicated on the battery door.



4. With new batteries correctly installed, the battery door can be closed.

Ensure the bolt is tightly fastened.



## IMD BATTERY INSTALLATION

1. The batteries of the IMD can be replaced without removing the device from the AV-3000 HT.



2. The battery pack itself can be un-clipped and accessed between the chin cup of the nosecup and face seal.

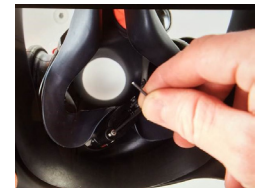


3. After un-clipping from the IMD, the battery container can be positioned to access the battery door.



4. The battery door can now be unscrewed and opened to access the 2 AAA batteries.

*Note: the retaining bolt cannot be unscrewed from the battery door itself.*



5. Replace the batteries, taking care to orientate them correctly.

Close the battery door and re-install the battery container in the reverse order of removal.

Ensure the battery container is firmly clipped back into place in the nosecup before use.

